

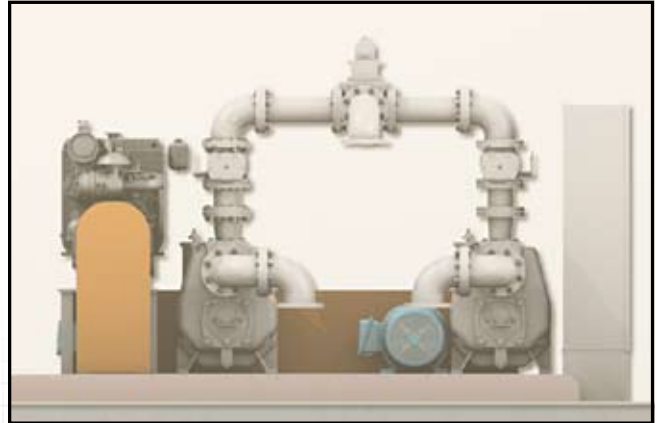


SEWAGE PUMPING STATIONS

AUTO-START

Gorman-Rupp's Auto-Start pump stations are pre-engineered units available with Super T Series®, Ultra V Series® and VS pumps with an extensive selection of motors, controls, piping and accessories. Gorman-Rupp has many standard designs for new installations, or custom designs can be provided for existing installations with minimum hookup time.

Auto-Start pump stations are available with 2", 3", 4", 6", 8" or 10" pumps, depending on pump model. For consistently heavy flows, a third or fourth pump may be added. Flows are available to 3400 GPM on single pump operation. For high head/low flow, we offer standard staged designs.



The Gorman-Rupp **Base Mounted Auto-Start** station uses a liquid level control which automatically converts to 12 volt DC and drives the pump with a standby engine providing normal pumping service during power failures. When power resumes, AC motor operation is automatically restored. It meets all standby requirements and uses a variety of fuels.

The Auto-Start unit is a space-saving, modular combination of pump, electric motor and engine, all coupled to the same drive, eliminating the need for an expensive engine/generator set.

MODULAR ENCLOSURES AVAILABLE FOR YOUR STATION



THE GORMAN-RUPP COMPANY, MANSFIELD DIVISION | P.O. Box 1217, Mansfield, Ohio 44901-1217, USA • Tel: 419-755-1011 • Fax: 419-755-1208 • E-mail: grsales@gormanrupp.com
GORMAN-RUPP INTERNATIONAL | P.O. Box 1217, Mansfield, Ohio 44901-1217, USA • Tel: 419-755-1011 • Fax: 419-755-1266 • E-mail: intsales@gormanrupp.com
GORMAN-RUPP OF CANADA, LTD. | 70 Burwell Road, St. Thomas, Ontario N5P 3R7, Canada • Tel: 519-631-2870 • Fax: 519-631-4624 • E-mail: grcanada@grcanada.com

GRpumps.com

©2008 The Gorman-Rupp Company. All rights reserved. Printed in the USA. Product information is subject to change; consult factory for details.

